

Lee Glynn

Web Design
United States

View the full portfolio at <http://www.thecreativefinder.com/lglynn>

Professional Experience and Curriculum Vitae

Online designer and multimedia producer with TampaBay.com. Freelance web designer and graphic artist. Principal partner and co-creator of DaisyButtonAdventures.com, an educational company dedicated to creating empowering and entertaining tools for children across multimedia platforms.

Previous Clientele

Visit Florida, Local Directive, InfographicWorld.com, McGraw-Hill, Houghton Mifflin, Weekly Reader, Grolier, MacMillan, Kirchoff-Wohlberg, Walker Design.

See full client list at: <http://leeglynndesign.com/resume.html>

Awards and Accolades

Complete resume at: <http://www.leeglynndesign.com/resume.html>

Printable resume at: <http://www.leeglynndesign.com/LeeGlynn.pdf>

September 1998 present

Senior Online Designer, tampabay.com

St. Petersburg Times, St. Petersburg, FL

Online designer and multimedia producer for daily and advance editorial content on sptimes.com and tampabay.com. Role includes identifying multimedia opportunities, project coordination, team concept development, and maintaining a close working relationship with editorial, photography, news graphics and IT departments. Additionally responsible for design, packaging and production of interfaces for news, multimedia specials, and vertical products. Previously responsible for corporate marketing sites, advertising/client sites, button, banner and tower advertising and coordination with sales staffs, clients and vendors. Work in an extensive, multi-platform, networked environment. Software: Flash, Photoshop, GoLive, Dreamweaver, Freehand, Illustrator, BBedit, Sound Studio, Final Cut Pro.

May 1998 September 1999

Lead Artist, Ad Sales Marketing/Artist, Creative Services

St. Petersburg Times, St. Petersburg, FL

Produced promotional material for advertising sales, corporate events and marketing departments of the St. Petersburg Times. Primarily utilized Photoshop, Freehand and Quark in the preparation of various printed materials including brochures, sales kits, posters, premiums, in-house ads, trade ads and displays. Art directed photo shoots for promotional material. Maintained close working relationship with marketing writers, account coordinators, production staff and service bureaus.

May 1990 - August 1991

Associate Art Director, Engineering News Record

McGraw-Hill Publishing Company, New York, NY

Produced information graphics and cover art primarily using Freehand. Designed page layouts and assisted in ensuring color quality. Maintained close working relationship with editorial and production staff and service bureaus.

November 1988 February 1990 15b Lloyd Road Singapore 239098 (co. reg. 201004398N)

Artist, Army Times, Navy Times, Air Force Times, Federal Times, Defense News, Space News, Military Market Magazine

Times Journal Publishing Company, Springfield, VA

Produced camera-ready information graphics and cover art for all domestic and

Lee Glynn

Web Design
United States

View the full portfolio at <http://www.thecreativefinder.com/lglynn>

Part of a special report from the **Tampa Bay Times** on extremely premature births and the advances in neonatal care that can make survival possible.

The statistical challenges of saving extraordinary preemies

Early arrival kills more newborns than anything else, and complications from early arrival kill more babies in their first year than anything else. Every week of pregnancy marks a milestone of development critical to survival.

Locally considered the limit of human viability outside womb: **24 weeks**. Very few doctors will resuscitate. **22 weeks**. Baby would be considered a born earlier than **20 weeks**. **28 weeks**. Nearly all babies born at this gestation will survive. **35 weeks**. The respiratory center in the brain matures. **36 weeks**. Considered full term. Most doctors feel morally and legally obligated to try to save a baby's life.

750 babies are born in the zone between viability and fully, 22 to 25 weeks of gestation.

Born at 23 weeks

The baby shown here was born on April 12, 2011, in St. Petersburg, Fla.

A baby like the one shown here, born at 23 weeks 6 days, 11.4 inches long and weighing 1 pound 4 ounces, has a chance to survive now thanks to medical advances that have increased the viability of micropreemies.

80% Odds this baby would die or be at least moderately disabled.

68% Odds this baby would die or be profoundly disabled.

53% Odds this baby would die no matter how hard the doctors tried to save her.

A micropreemie is a baby born before about 26 weeks of gestation and weighing less than about 1½ pounds.

The gray zone of viability

With every week that a baby remains in utero, the chances of survival improve. Thirty years ago, the limit of viability was around 28 weeks. Now it is much earlier.

Chances of survival per week of gestation

Gestational Week	Chances of survival	Chance of death or moderate to severe disability
22 weeks	5%	99%
23 weeks	26%	
24 weeks	56%	
25 weeks	75%	38%

Chance of death or moderate to severe disability decreases with each passing week.

U.S. is among countries with the highest number of preterm births.

500,000^{yr} Statistics

11.7% of babies were born prematurely in the U.S. in 2011.

1 out of 8 babies are born prematurely.

13% of babies were born prematurely in Florida in 2011.

3 years is a year that the premature birth rate has dropped in Florida.

Top causes of early labor

Often parents never learn why babies come early, but socioeconomic, biological and environmental factors can increase the risk of preterm birth.

- Having a previous premature birth
- Carrying more than one baby
- An interval of less than six months between pregnancies
- Conceiving through in-vitro fertilization
- Problems with the uterus, cervix or placenta
- Smoking cigarettes, drinking alcohol or using illicit drugs
- Poor nutrition
- Some infections during pregnancy
- Some chronic conditions, such as high blood pressure and diabetes

The world's smallest baby was born in **2004** in a town that the premature birth rate has dropped in Florida. Rumanika Rahman survived without major health problems.

weighting **9.2 oz** at 25 weeks

Costs of care are daunting

Hospital bills for preemies can be staggering. A typical preemie birth costs ten times what a birth for a full-term baby costs, and micropreemies are exponentially more expensive. Still, experts say neonatal care is a bargain in medicine, because it can buy many years of useful life.

\$26 bil. annual cost of prematurity in the U.S. in 2008.

\$50 k average cost of neonatal care for preemies.

\$4.5 k average cost for a normal birth in the United States.

\$1 mil.+ typical cost of an extremely preterm baby.

90% of costs for babies born prematurely were paid by employer health plans when moms were insured.

48% of hospital stays for preterm infants were covered by Medicaid.

Never let go: a micropreemie's story

Visit tampabay.com/neverletgo to read the story of a baby born four months early. Her arrival strained the limits of what is possible and what is right. Babies born so early look like tiny, gasping aliens, eyes fused shut, skin so translucent you can see their hearts flicker. The newest and most aggressive treatments can sometimes save them, but 80 percent will die or end up disabled. In April 2011, Kelley Benham's baby was born into this awful calculus. She and her husband faced impossible questions. Was the dream of a healthy baby too much to hope for, the cost of saving her too high? And if so, did they have the strength to let her go? Benham, a prize-winning writer and editor, tells her story in a three-part series.

Tampa Bay Times
tampabay.com

Sources: March of Dimes, Eunice Kennedy Shriver National Institute for Child Health and Human Development, Dr. Wilson Rutherford, Professor and Department Chair at USF Health, Research assistance from Natalie Watson, Photo: Chris Reed/Times
Graphic: Kelley Benham, Lee Glynn/Times

View the full portfolio at http://www.thecreativefinder.com/lglynn

Part of a special report from the Tampa Bay Times on extremely premature births and the advances in neonatal care that can make survival possible.

The delicate science of keeping preemies alive

Caring for an extreme preemie in the first days of life means creating a technological womb. Caretakers must perform a balancing act of measurements, odds and difficult choices. The preemie's body, sometimes as small as a Barbie doll's, does not provide much access for the myriad tubes and sensors for temperature, oxygen intake, nutrition and more.

21-100% oxygen provided to control blood flow at 21%
Endotracheal tube connects the baby to the ventilator and can breathe on her own.

40-60 breaths per minute for the premature infant
100-160 beats per minute for the newborn infant

Chest leads measure heart rate and respiration

LVC The umbilical venous catheter runs up near the heart, dispensing medications and nutrients
• Oxygenate - for blood pressure
• TPN - Total Parenteral Nutrition
• Liquid fats • Antibiotics • Coffee

UAC The umbilical artery catheter is used to draw blood. It provides a constant measure of blood pressure.

Peripheral IV is used to give blood products and sodium bicarbonate, which balances acidity in the blood.

Blood pressure cuff Measures blood pressure every hour.

85-92% is the ideal oxygen saturation in the blood, measured by the pulse oximeter.

The footprints of Juniper French, born at 23 weeks, measured 1.5 in.

A glossary of severe complications

Here are some of the most common threats to babies weighing less than 3 pounds.

93% **Respiratory distress syndrome**
RDS is the most common illness in the NICU. It mostly affects premature infants who are too young to produce their own lung surfactant, a slippery substance that keeps the lungs from collapsing. RDS is treated with artificial surfactant and supplemental oxygen.

6% **Severe bleeding in the brain**
Intraventricular hemorrhage is most common in babies born before 30 weeks of pregnancy. It can cause pressure in the brain and brain damage.

7% **Retinopathy of prematurity**
ROP is an abnormal growth of blood vessels in the eye. In severe cases, laser surgery is required to prevent vision loss.

5% **Necrotizing enterocolitis**
NEC, the death of intestinal tissue, is thought to be related to bacteria or to decreased blood flow to the bowels. It causes feeding problems and can be fatal.

46% **Patent ductus arteriosus**
An unborn baby has an open blood vessel near the heart that normally closes on its own. When a baby comes too soon, sometimes doctors have to close the vessel. Left untreated, PDA can lead to heart failure.

36% **Septic**
Premature babies are susceptible to serious infection because their immune systems are immature. Skin that easily tears and numerous IV access entry points for bacteria.

An incubator for a womb

Some of the first incubators were modeled after those used for poultry. An early one was designed by the director of the Paris Zoo. In the early 1900s, hospitals had no facilities for preemies. A doctor named Martin Courney saved many babies by exhibiting them in incubators at expos and World's Fairs as a 10-cent sideshow. Today, the GE Giraffe Omnicare is a hospital standard. One doctor calls it the "BMW Bed" because it costs as much as a car.

36.8 to 37° C is the optimal temperature for early preemies. A heat lamp and a radiant warmer built into the mattress keep the baby warm from all angles. The incubator's air flow system can maintain the proper temperature even when the hood is open.

every 6 hours a hands-on assessment is performed. Caretakers try not to disturb the baby more often than that. A monitoring system alerts them when they're needed.

4 portholes provide access for diaper changes and repositioning. Parents are encouraged to look in. Their babies' feet are taught not to overstimulate them.

95% is the ideal humidity level. Humidity protects the delicate skin not yet ready for everyday handling. Premie's skin easily peels, which can lead to infection.

\$35K Cost of the Omnicare.

45 minutes of battery power can be provided for transfers to treatment or in an emergency.

360° Rotation of the "baby Susan" allows for improved access during critical procedures. Sensors in the bed provide temperature and weight readings useful in dosing and treatment decisions.

Never let go: a micropreemie's story

Visit tampabay.com/neverletgo to read the story of Juniper French, born in 2011 at Bayfront Medical Center and cared for in the NICU at All Children's Hospital in St. Petersburg, Fla. When the baby came four months early, Kelley Benham and her husband faced impossible questions. Was the dream of a healthy baby too much to hope for, the cost of saving her too high? And if so, did they have the strength to let her go?

Tampa Bay Times
Investigation: Kelly Benham, Lisa O'Connell
Photography: Kelly Benham, Lisa O'Connell
Graphic: Kelly Benham, Lisa O'Connell

Web Design United States

ELECTION 2012

...after months more cutting ranks of political ads, campaign events, media events, town-hall, poll results and breakdowns of U.S. electoral college results, the 2012 election has come to a close. The Times reports a graphic look at the results. From the social media punchlines for Florida voters to the candidates who will be the next president of the United States.

Tweets on Election Day

1.8 million in 2008
817,000 in 2012
Amount of Tweets on Election Day: 82 million
Tweets on Election Day: 12 million

Social media

32% of conservatives
27% of liberal Democrats
775,000+ photos with the term "vote" "voted" or some variation shared on Instagram on Election Day

On Twitter, an image posted to the @barackobama account of Obama hugging his wife with the message "Two more years, because the next re-elected vote will be less than 20 minutes. The photo was also shared by Barack Obama's Facebook page. It has received 4 million + "likes" making it the most liked Barack Obama Facebook page.

With Twitter PWS and outside groups raising money for Obama and Romney, the number of tweets for Obama rose.

Campaign Spending

71 million Obama's 2012 campaign
34.5 million Romney's 2012 campaign
21 million Obama's 2012 campaign
17 million Romney's 2012 campaign

The outcomes

Electoral Vote

332 FOR Obama/Riders
206 FOR Romney/Riders

House

44th President and 57th Vice President of the United States

Senate

228-3
190-193-3

U.S. Representatives

47-42-2
53-51-1

The Florida Vote

Florida again came under intense scrutiny during the 2012 election. As of 11:00 p.m. EST, the results of the 2012 election in Florida were as follows:

Barack Obama: 72.21%
Mitt Romney: 27.08%
Rick Warren: 0.68%

Looking ahead

INAGURATION

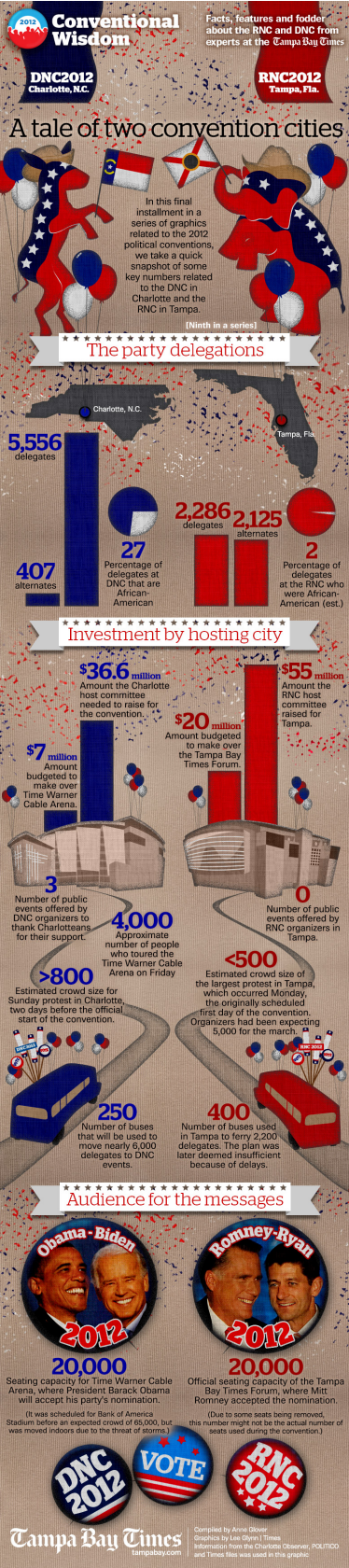
Traditionally, presidential inauguration day is the first day of the year in the Constitution. In 2012, the day of the inauguration ceremony, the swearing in will take place in private at the White House, the public inauguration ceremony will be pushed back one day to Jan. 21.

Number of times inauguration date has fallen on a Sunday

Tampa Bay Times

15b Lloyd Road Singapore 239098 (co. reg. 201004398N)
helpdesk 656.227.2902, fax 656.227.0213

View the full portfolio at <http://www.thecreativefinder.com/lglynn>



View the full portfolio at <http://www.thecreativefinder.com/lglynn>



Web Design United States

Facts, figures and fodder for RNC-Tampa from local experts at the RNC Tampa Press Conference

(It's all in a name)

Cool facts about our August Heat

RNC, Tampa
Late August. It's all adding up to a bit of angst about how people attending the Republican National Convention are going to cope with the oppressive heat during that week. It's not a minor matter, because here in the U.S., weather-related issues in the United States, resulting in hundreds of fatalities each year. On average, excessive heat claims more lives each year than floods, lightning, tornadoes and hurricanes combined. We're taking a closer look at some of our series of graphics related to the convention.

73° Why it's HOT here

Approximate angle of the sun in New York City on June 20, the summer solstice

85° Approximate angle of the sun in Central Florida, same date, same time. The higher the sun, the less it is able to heat.

2758'N Latitude where Tampa is located. Draw an imaginary line around the globe and you'll see it crosses through Mexico, Egypt and Saudi Arabia.

The heat is ON

3-5pm hottest part of the day

98 The hottest high temperature in August.

89.2 Average high temperature for August.

83.2 Average temperature for August.

76 Average temperature at night in Tampa during August.

No. 4 That category behind Phoenix (11), Las Vegas (78) and Miami (77)

7:07 am Opening day of the convention

12:50 Hours of daylight in Tampa Bay that day

7:57 pm Same time, same day

4 Minutes shaved off that summer time by the convention's last day, Aug. 30.

But not like this

134 North America's highest temperature ever recorded, at Death Valley, Calif. July 10, 1913 at Greenland Ranch.

158 Temperature at which an egg becomes firm in the convention's last day of August. (But don't try to eat it on pavement; a car hood is better.)

You + Heat

2 weeks Amount of time humans need to adjust to drastic changes in temperature.

90 to 95 The average range of normal skin.

104 Internal temperature at which the body begins to exhibit symptoms of heat stroke, including confusion, loss of consciousness and unconsciousness.

95 Outside temperature at which body's inner core begins to rise.

48 Percentage of blood being pumped to the skin to create perspiration.

150 Heart rate when that happens. The rest of the organs (e.g. brain, muscles) operate on the blood normally needed. Cognitive thinking, athletic skills, and emotions such as anger and confidence become color.

Sticky news

High humidity makes people feel hotter outside in the summer because it reduces the effectiveness of sweating to cool the body by preventing the evaporation of perspiration from the skin.

65% to 90% The range of relative humidity in Tampa in August.

60% The point at which humans start feeling uncomfortable (too hot), below 20 percent is too dry.

83 average temperature

63 humidity percentage

= 87 The resulting average heat index for Tampa

90 + 90 average humidity temperature percentage

= 122 The resulting heat index based on average. High

Relief is near

400,000 Number of bottles of water being consumed in Tampa is increasing to ease heat concerns. It will be served in paper cups.

50,000 gallons of water

10 Number of misting stations, most of them used for hurricane relief, being used for the RNC.

Health Department to bring protesters and police officers, as well as police dogs and horses.

2-4 Number of misting stations protesters would get from that sidewalk.

1977 The year that the last mass exodus ever left Tampa, Jan. '19. The exodus amounted to all of

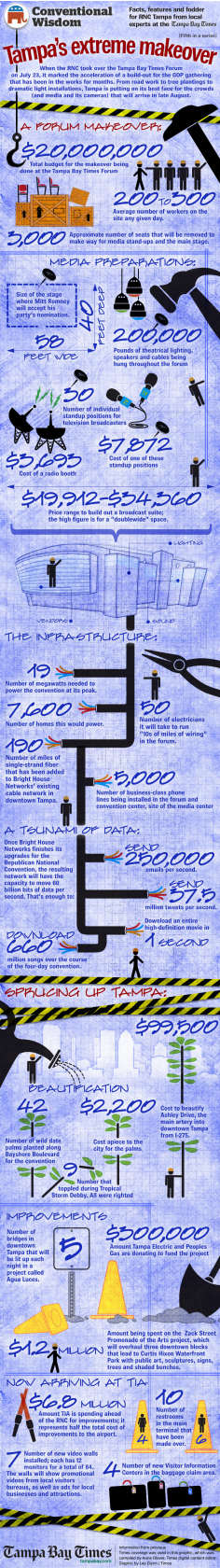
0.2 inches (0.5 cm)

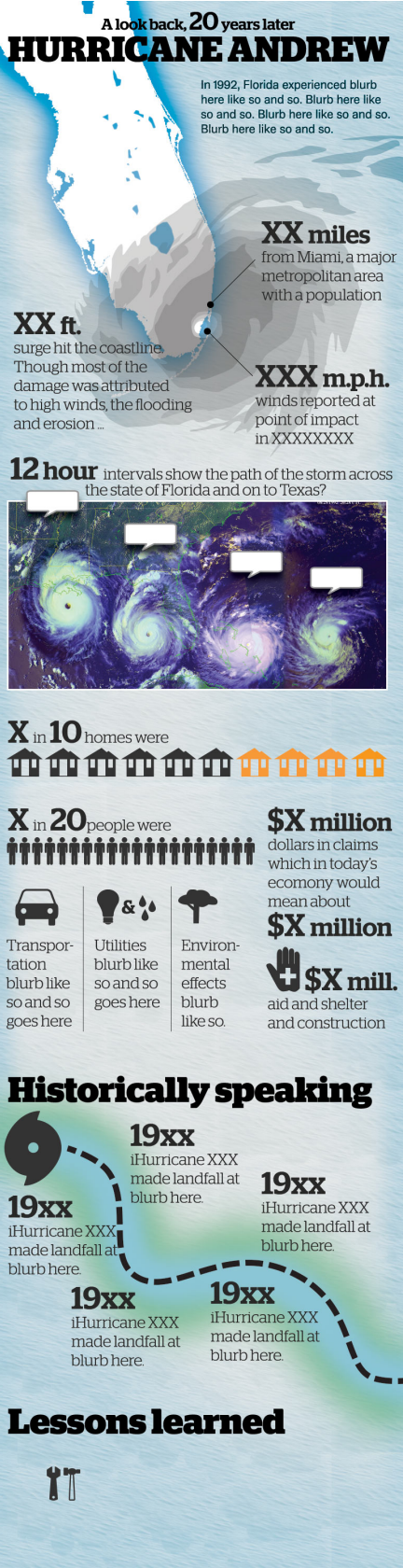
Tampa Bay Times

Copyright © by Turner and Schmitt, Inc. All rights reserved.

15b Lloyd Road Singapore 239098 (co. reg. 201004398N)
helpdesk 656.227.2902, fax 656.227.0213

View the full portfolio at <http://www.thecreativefinder.com/lglynn>





Bushy league



THE MARTINEZ



THE WEIRDO



THE FIREBALLER



THE LEGEND



Dave Martinez
The full-out, Tom Hanks from *Cast Away* beard is all trimmed nice and neat, but at one point we were all pretty sure the Rays bench coach kept some of his prettiest things — you know, credit cards, keys, maybe some loose change — in that thick web of hair.



Fernando Rodney
Rodney is the human form of Woolly Willy. You remember Woolly Willy, the toy where you dragged metal filings over a cartoon face with a magnetic wand. You couldn't help but give Willy a giant beard, which kind of made him look like ... Fernando Rodney.



THE ALL-TIMER



THE HOT ROD



THE CHOPS



THE STRIPE



THE MAD BEARD



THE CAVEMAN



THE NEW ROLLIE

LEE GLYNN | Times

Baseball's facial hair is unmatched by other sports.

Rapunzel. Samson. Brian Wilson? The hair doesn't make the man. It doesn't even make the man throw harder or hit a ball farther. But it sure makes baseball more fun to watch. More than any other sport, baseball celebrates facial hair. There are beards. There are sideburns. There are mustaches. There's the regular mustache, the handlebar and the pencil-thin. There's the goatee and the soul patch, the five o'clock shadow and the ZZ Topper.

You can look cool like Tom Selleck, ominous like Edgar Allan Poe or scary like Scott Wolf — you know, *Teen Wolf*. So today, put down the razor and enjoy our favorite whiskers in baseball.

» See **FACIAL HAIR, 4C**



Luke Scott
Is he an extra playing an Amish man in *Witness*? Is he Wolverine from the *X-Men* series? Did his electric razor run out of juice a quarter of the way through his shave? When you're knocking in runs, it's cool. When you're going 0-for-41, not so much.

Lee Glynn

Web Design
United States

View the full portfolio at <http://www.thecreativefinder.com/lglynn>



15b Lloyd Road Singapore 239098 (co. reg. 201004398N)
helpdesk 656.227.2902, fax 656.227.0213