

# Fred Vanderpoel

Advertising  
United States

View the full portfolio at <http://www.thecreativefinder.com/vanderpoel>

## Professional Experience and Curriculum Vitae

Vanderpoel

@adfilmtv

Clio Award winner, writer, film director, REDLOVE, THE ART AND CONSEQUENCE OF ILLUSION - EYESIGHT - HOW TO AD - <http://ADFILMTV.com>

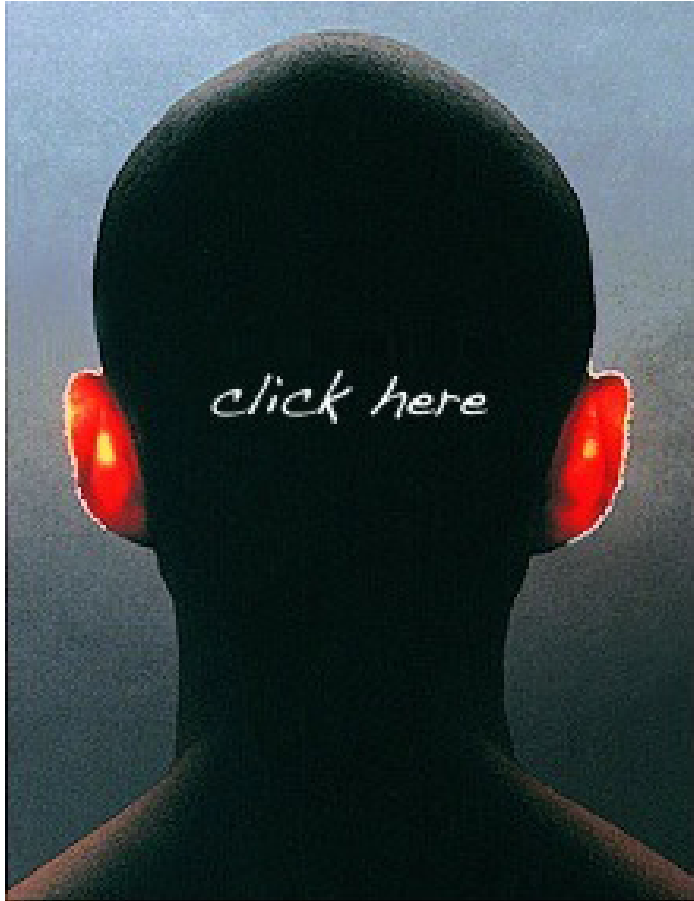
## Previous Clientele

ABC, ACCESSIBLE HAWAII, ACCOLADE, AEG, AGFA-GEVAERT, AIR FRANCE, AIR NEW ZEALAND, AMARAY, AMERICAN BAKERIES, AMERICAN EXPRESS, AMERICAN HOME PRODUCTS CORPORATION, AMERICAN HONDA MOTOR COMPANY, AMPEX, ANHEUSER BUSCH, APPLE COMPUTER, ASAHI OPTICAL, ATARI, AT&T, AVON COSMETICS, BANANA BOARD, BANK OF AMERICA, BANK OF THE WEST, BANLEY FOODS, BARNES-HIND CORPORATION, BASF, BECKS BEER, BETTER HOMES AND GARDENS, BIRKENSTOCK SHOES, BLUE CROSS, BOLEX, BRIDGESTONE TIRES, BRISTOL-MEYERS, BRITANIA JEANS, BUDWEISER, BURDA MODEN, CALIFORNIA DENTAL ASSOCIATION, CALIFORNIA FIRST BANK, CALIFORNIA GRAPES AND FOODS, CALIFORNIA MILK ADVISORY BOARD, CALIFORNIA OLIVE INDUSTRY, CALIFORNIA PRUNE BOARD, CALIFORNIA RAISIN ADVISORY BOARD, CALIFORNIA STRAWBERRY ADVISORY BOARD, CANADIAN PACIFIC AIRLINES, CANTERBURY OF NEW ZEALAND, CASIO COMPUTER, CASTLE & COOK, CBS, CELLULAR ONE, CHEVRON, CHICAGO MAGAZINE, CHIQUITA, CHRONICLE BROADCASTING, CHUCK E, CHEESE PIZZA, CLARIS, CLOROX, CMA, COCA-COLA, COLGATE PALMOLIVE, COLUMBIA RECORDS, CONSOLIDATED FOOD CORPORATION, CROWN ZELLERBACH, CUTTER LABORATORIES, DEL MONTE, DELTA LINES, EASTERN AIRLINES, EASTMAN KODAK, EEG, E&J GALLO WINES, ELIZABETH ARDEN, ELLE MAGAZINE, EXXON, FIAT, FLORIDA LIMES, FORD MOTER CORPORATION, FOREMOST MCKESSON, FOSTER FARMS, FOUR SEASONS RESTAURANTS, GAF, GENENTECH, GENERAL ELECTRIC, GENERAL FOODS, GENERAL MILLS, GLEN ELLEN WINERIES, GILLETTE, GRANDMA FOODS, GRANNY GOOSE, GRUNER & JAHR, GTE, HALCYON, HATHAWAY, HAWAII FOODBANK, HEWLETT-PACKARD, HIBERNIA BANK, HILTON HOTELS, HOME CHOWDER FOODS, HOME TOUCH BAKERIES, HOST INTERNATIONAL, HYATT HOTELS, IBM, IDAHO POTATOES, IDAHOAN POTATOES, HONOLULU SYMPHONY, IGLO/LANGNESE, I.MAGNIN, INTEL, INTERNATIONAL BRANDS, ISUZU, JACUZZI WHIRLPOOL BATH, JOHNSON & JOHNSON, KIDDE, KIMBERLY-CLARK, KLM AIRLINES, LEVI STRAUSS, LINDSAY OLIVES, LITTON MICROWAVE, MAYFIELD FUND, MARRIOTT HOTELS, MARTIN MARIETTA, MARTINI ROSSI, MCGRAW HILL, MERCEDES-BENZ, METROMAIL, MGM-UA, MID CONTINENT TELEPHONE, MILLENIUM, MILLER BEER, MITSUBISHI,, MOBIL OIL, MOTOROLA, NATIONAL SEMICONDUCTOR, NATROL, NESTLE ENTERPRISES, NIKE, NIKON, NISSAN, NIVEA, NOVELL, OLYMPIC AIRWAYS, OLYMPUS OPTICAL, OUTSPAN ORANGES, OVALTINE, PACIFIC STEREO, PEPSI-COLA, PHILIPPINE AIRLINES, PHILIPS, PIZZA HUT RESTAURANTS, PLANTRONICS, POLYDOR RECORDS, POTATO BOARD, PROCTOR AND GAMBLE, QUICK VERLAG, RCA, RED COACH LETTUCE, RENAULT FRANCE, REPUBLIC AIRLINES, RR DONNELLY AND SONS, SABENA AIRLINES, SAGA FOOD SERVICE, SAN FRANCISCO FOODBANK, SAN FRANCISCO GRAINITS, SAPPORO BEER, SCHIFF, SCHMIDT'S BEER, SCHWARTZKOPF, SCHWEPPE'S, SEAGRAMS, SEGA, SHAKLEE CORPORATION, SHELL OIL, SONOMA VINEYARDS, SONY CORPORATION, SORCIM, SOUTHAMPTON COMPANY, SOUTHERN BELL

# Fred Vanderpoel

Advertising  
United States

View the full portfolio at <http://www.thecreativefinder.com/vanderpoel>



15b Lloyd Road Singapore 239098 (co. reg. 201004398N)  
helpdesk 656.227.2902, fax 656.227.0213