

Tetsuya Toshima

Art Direction

Japan

View the full portfolio at <http://www.thecreativefinder.com/tetsuyatoshima>

Professional Experience and Curriculum Vitae

Tetsuya Toshima has been also active in the fields of TV programs and Graphic, interior, fashion to visual-communicate messages of concepts. He says, "I think I don't choose production measures to express consciousness of time. By means of this I believe I can generate works which have universality being similar to that of time." He keeps making the artwork with "time" as his main theme.

Facebook page. <http://www.facebook.com/TETSUYATOSHIMA.JP>

Previous Clientele

Works

-Awards & Recognition

1997 6th Annual All-Japan Art Salon - Prize Winner

2004 Levi's (R) Laser Art competition - Grand Prize winner

2008 Shown in SHIFT 2009 Calendar Competition as one of 12 creators

2011 Shown in Icon's birthday cards for 100th issue (UK)

2012 "Bruce Lee Foundation" Group Show (USA)

-Magazine

What's Next (UK), DAZED and CONFUSED (UK), Magazine Me (Germany), Icon Magazine (UK), IdN (Hong Kong), Digital Artist (UK), Musicman (JP), MdN(JP)

-Books

Illusive 3 / Gestalten (Germany), Pockopedia / Pocko Editions (UK), Hand Made Illustration / MONSA (Spain)

-Fashion

2K by Gingham (USA), Matinique (Denmark), FIVEFOX, UNIQLO, TAKEO KIKUCHI Collection, Kyoji Maruyama Collection

-Advertisement

Victor Entertainment, Inc., World Photo Press.Co.,Ltd., FreshTech Inc.

-Others

BBC (UK), Tres Tintas Barcelona (Spain), Poolga - iPhone/iPod Touch (Spain), Yellowapp "opps!" artists edition (Portugal), The Cat Street Gallery (Hong Kong), ArtLimits (Turkey), Victor Entertainment, Fuji Television Network - Wake up TV Creator Coupon Strap, Created title logo for Konami's TV Cartoon series, TSUTAYA,

and more...

Awards and Accolades

2012:

"Bruce Lee Foundation" Group Show / USA

2011:

Shown in Icon's birthday cards for 100th issue / UK

Designed wallpapers for Tres Tintas Barcelona / Spain

Key Visual for YOU/UTA CD Cover

Published works for MONSA - Hand Made Illustration / Spain

"2K by Gingham" T-shirt graphic design / USA

Tetsuya Toshima

Art Direction
Japan

View the full portfolio at <http://www.thecreativefinder.com/tetsuyatoshima>

Please kindly get in touch for portfolio works.

Please kindly get in touch for portfolio works.



15b Lloyd Road Singapore 239098 (co. reg. 201004398N)
helpdesk 656.227.2902, fax 656.227.0213

Tetsuya Toshima

Art Direction
Japan

View the full portfolio at <http://www.thecreativefinder.com/tetsuyatoshima>



15b Lloyd Road Singapore 239098 (co. reg. 201004398N)
helpdesk 656.227.2902, fax 656.227.0213

Tetsuya Toshima

Art Direction
Japan

View the full portfolio at <http://www.thecreativefinder.com/tetsuyatoshima>

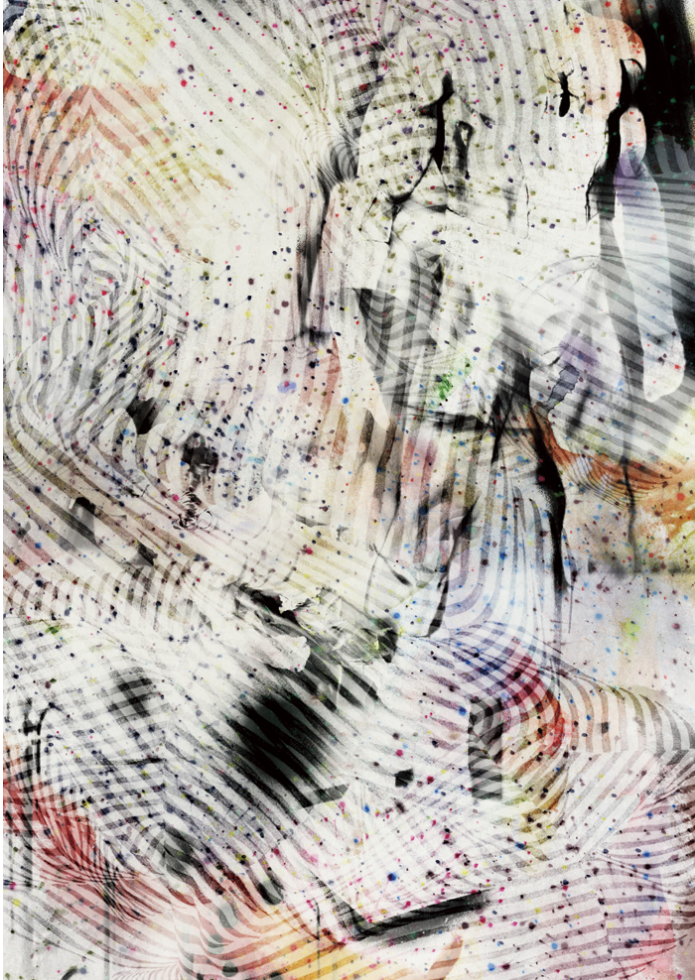


15b Lloyd Road Singapore 239098 (co. reg. 201004398N)
helpdesk 656.227.2902, fax 656.227.0213

Tetsuya Toshima

Art Direction
Japan

View the full portfolio at <http://www.thecreativefinder.com/tetsuyatoshima>

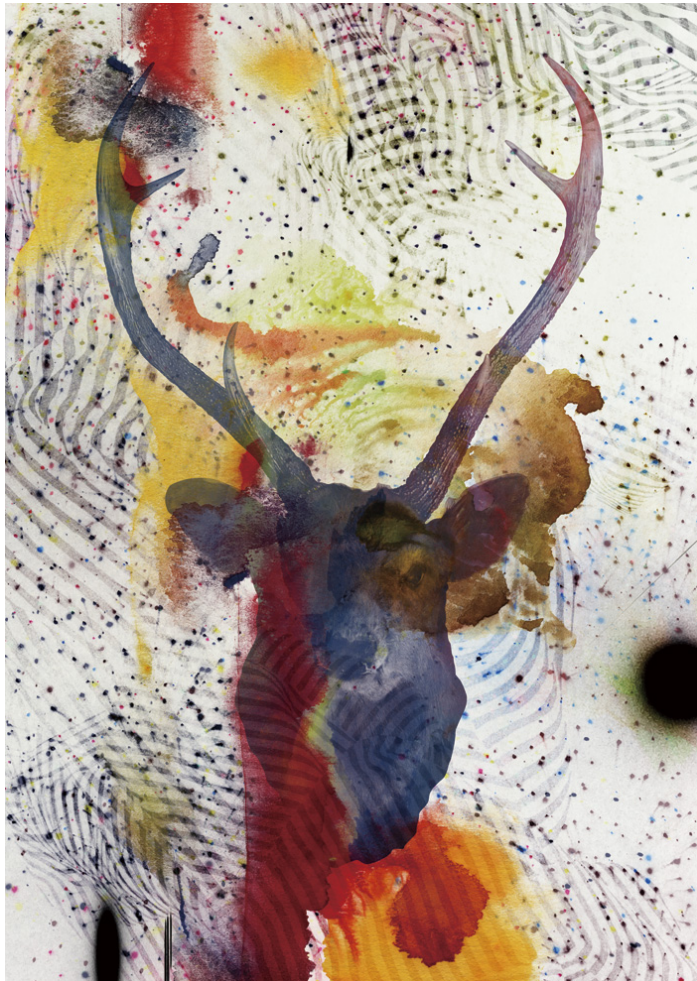


15b Lloyd Road Singapore 239098 (co. reg. 201004398N)
helpdesk 656.227.2902, fax 656.227.0213

Tetsuya Toshima

Art Direction
Japan

View the full portfolio at <http://www.thecreativefinder.com/tetsuyatoshima>



15b Lloyd Road Singapore 239098 (co. reg. 201004398N)
helpdesk 656.227.2902, fax 656.227.0213

Tetsuya Toshima

Art Direction
Japan

View the full portfolio at <http://www.thecreativefinder.com/tetsuyatoshima>



15b Lloyd Road Singapore 239098 (co. reg. 201004398N)
helpdesk 656.227.2902, fax 656.227.0213

Tetsuya Toshima

Art Direction
Japan

View the full portfolio at <http://www.thecreativefinder.com/tetsuyatoshima>



15b Lloyd Road Singapore 239098 (co. reg. 201004398N)
helpdesk 656.227.2902, fax 656.227.0213

Tetsuya Toshima

Art Direction
Japan

View the full portfolio at <http://www.thecreativefinder.com/tetsuyatoshima>



15b Lloyd Road Singapore 239098 (co. reg. 201004398N)
helpdesk 656.227.2902, fax 656.227.0213

Tetsuya Toshima

Art Direction
Japan

View the full portfolio at <http://www.thecreativefinder.com/tetsuyatoshima>



15b Lloyd Road Singapore 239098 (co. reg. 201004398N)
helpdesk 656.227.2902, fax 656.227.0213