

# vivienne chan

Multimedia Art  
United Kingdom

View the full portfolio at <http://www.thecreativefinder.com/glowvim>

## **Professional Experience and Curriculum Vitae**

Hello, I'm a creative designer and I use 3D cad to visualise ideas for interiors and furniture. I design and make sculptural lights using materials that are common mass produced and forgettable items. Creating forms from these items and seeing their interaction with light, involving shadows and unpredictable pools of light continues to fascinate me. I also use creative software such as Sketsa and Compositor to create digital art. My work can be seen at [www.glowvim.moonfruit.com](http://www.glowvim.moonfruit.com)

## **Previous Clientele**

Please kindly get in touch for more information.

## **Awards and Accolades**

Please kindly get in touch for more information.

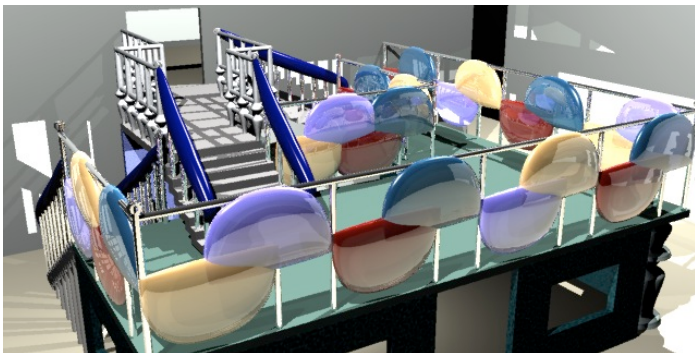
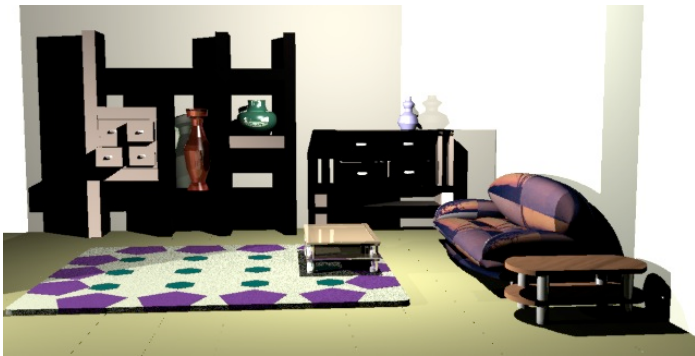
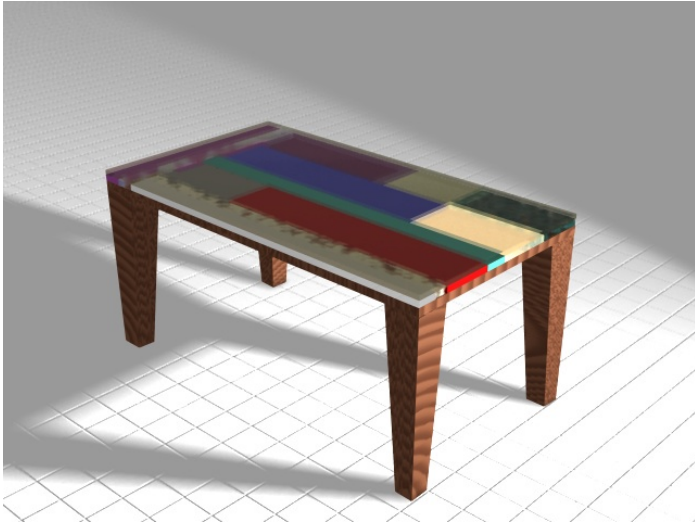
## **Awards and Accolades**

Please kindly get in touch for more information.

# vivienne chan

Multimedia Art  
United Kingdom

View the full portfolio at <http://www.thecreativefinder.com/glowvim>

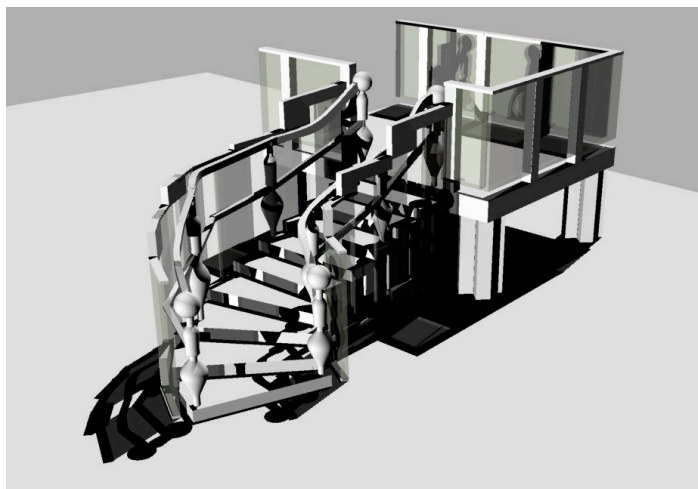


15b Lloyd Road Singapore 239098 (co. reg. 201004398N)  
helpdesk 656.227.2902, fax 656.227.0213

# vivienne chan

Multimedia Art  
United Kingdom

View the full portfolio at <http://www.thecreativefinder.com/glowvim>



15b Lloyd Road Singapore 239098 (co. reg. 201004398N)  
helpdesk 656.227.2902, fax 656.227.0213

# vivienne chan

Multimedia Art  
United Kingdom

View the full portfolio at <http://www.thecreativefinder.com/glowvim>



15b Lloyd Road Singapore 239098 (co. reg. 201004398N)  
helpdesk 656.227.2902, fax 656.227.0213

# vivienne chan

Multimedia Art  
United Kingdom

View the full portfolio at <http://www.thecreativefinder.com/glowvim>



15b Lloyd Road Singapore 239098 (co. reg. 201004398N)  
helpdesk 656.227.2902, fax 656.227.0213



# **vivienne chan**

**Multimedia Art  
United Kingdom**

View the full portfolio at <http://www.thecreativefinder.com/glowvim>



15b Lloyd Road Singapore 239098 (co. reg. 201004398N)  
helpdesk 656.227.2902, fax 656.227.0213