

Keith Waller

Multimedia Art
5 Wellington Square
United Kingdom

View the full portfolio at <http://www.thecreativefinder.com/duchamp1>

Professional Experience and Curriculum Vitae

Keith Waller was born in 1956 in Dartford, Kent. He studied Art & Design at The University of Brighton. From 1987 to 2007 he worked for the Cibus Group as visual design director for leading retail brands including Tesco, Waitrose and Sainsbury's. His design work was exhibited at The Tate Gallery, Liverpool, in the "Shopping" exhibition 2002-2003 alongside Claes Oldenburg, Ben Birillo, and Andy Warhol. His fine art work beginning in 1970

combines commercial art influences with classical art in landscape, portraiture and abstract styles. Many of the works are on a large scale and can be seen in a number of corporate venues, with online and

gallery sales accounting for many of the smaller works. Throughout these works acknowledgements to favourite influences of Magritte, Warhol

and the writer William Burroughs are frequently made, and are extensively based on Zen Buddhist practices of enlightenment. Social networking has brought many viewers to see these works and an ardent following of Waller's Zen influenced Haiku poems on Twitter (@iplpartners) has introduced new patrons to the visual arts. Often working with Film-makers, Mime Performers, Musicians, and Poets Waller's works over the past 40 years engage with an oriental and diverse mysticism coupled with Western Pop and Commercial art. Waller's work is currently curated by The Arts Trust and published by @iplpartners and The Reading Room. . Haiku Poems: Many of the artwork's have Haiku poems attached. Haiku's originated in the 16th century in Japan and are often associated with Zen enlightenment (see below). Typically consisting of 14 syllables in 3 lines and engaging with nature. The western structure of the Haiku is treated with a degree of flexibility as Japanese syllables or Omms differ in their content from English word constructions. Many of these Haiku's appear daily at

@iplpartners on Twitter written by Waller. Matsuo Basho Haiku: "I like to wash The dust of the world In the tears of dew." Zen Buddhism: In Japan, Buddhism has become well-known in the form of the Zen Sect. Zen is a technique of meditation; it is believed that enlightenment and epiphany

come suddenly and intuitively, not by prolonged intellectual effort. Man does not have to strive, but only to realize the spiritual reality of the world in which he lives. Meditation alternates with physical exercise or manual labour as part of the art of self-mastery. Jujitsu is much practised. Zen strongly appealed to the medieval military class, inspiring their code of chivalry.

Previous Clientele

Tesco, Waitrose, J.Sainsbury, The Tate Gallery, The Arts Trust, Blurb.com, Nikon, and Porsche.

Awards and Accolades

Keith Waller was born in 1956 in Dartford, Kent. He studied Art & Design at The University of Brighton. From 1987 to 2007 he worked for the Cibus Group as visual design director for leading retail brands including Tesco, Waitrose and Sainsbury's. His design work was exhibited at The Tate Gallery, Liverpool, in the "Shopping" exhibition 2002-2003 alongside Claes Oldenburg, Ben Birillo, and Andy Warhol. His fine art work beginning in 1970

combines commercial art influences with classical art in landscape, portraiture and abstract styles. Many of the works are on a large scale and can be seen in a number of corporate venues, with online and

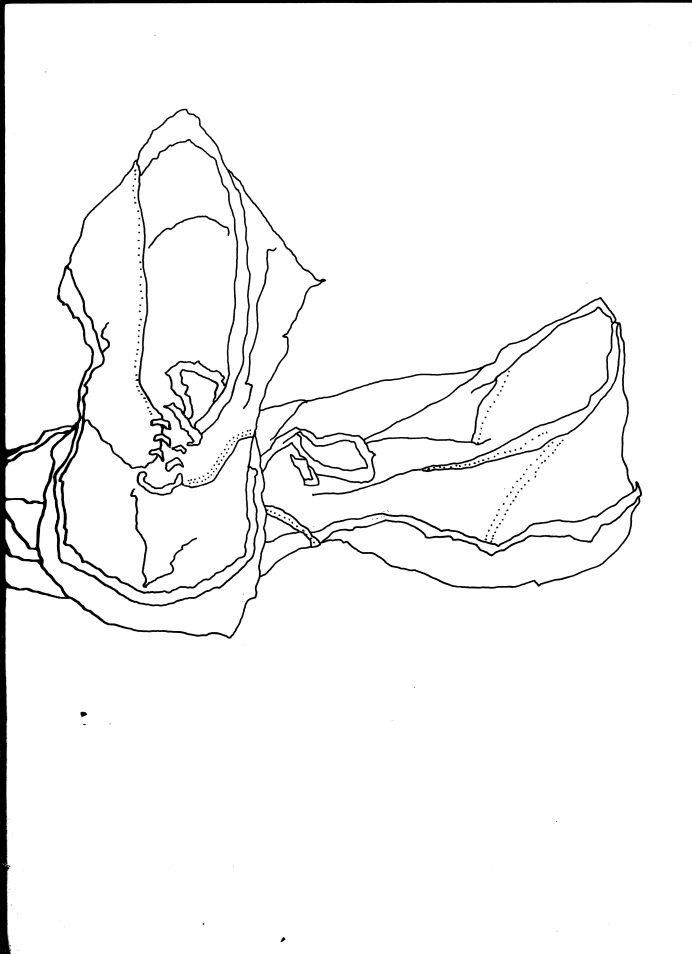
gallery sales accounting for many of the smaller works. Throughout these works

15b Lloyd Road Singapore 239098 (co. reg. 201004398N)

Keith Waller

Multimedia Art
5 Wellington Square
United Kingdom

View the full portfolio at <http://www.thecreativefinder.com/duchamp1>



Keith Waller

Multimedia Art
5 Wellington Square
United Kingdom

View the full portfolio at <http://www.thecreativefinder.com/duchamp1>



Keith Waller

Multimedia Art
5 Wellington Square
United Kingdom

View the full portfolio at <http://www.thecreativefinder.com/duchamp1>

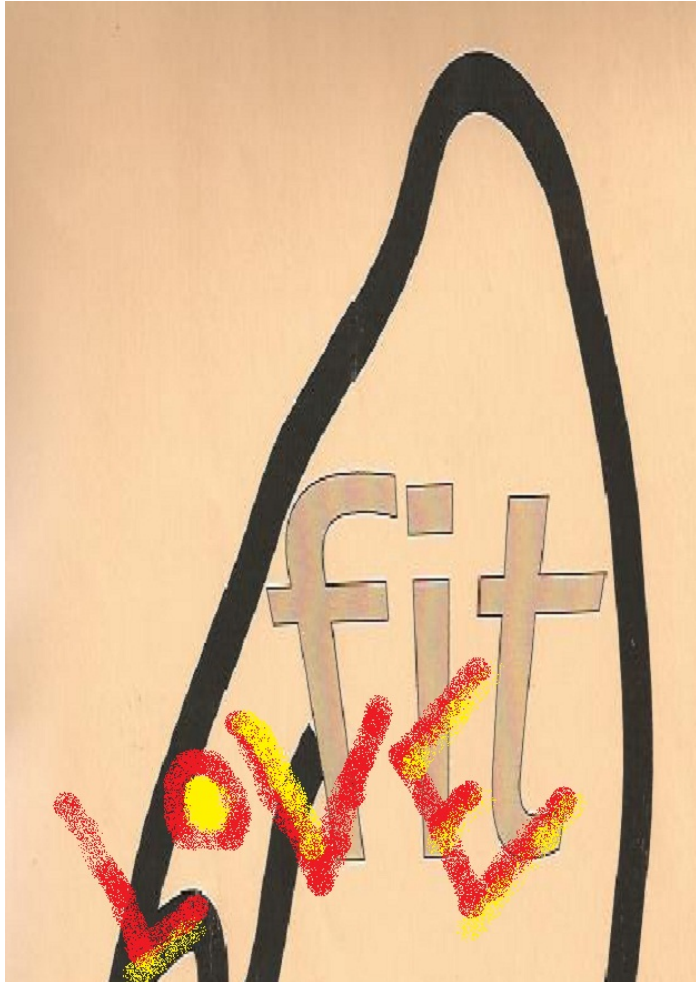


15b Lloyd Road Singapore 239098 (co. reg. 201004398N)
helpdesk 656.227.2902, fax 656.227.0213

Keith Waller

Multimedia Art
5 Wellington Square
United Kingdom

View the full portfolio at <http://www.thecreativefinder.com/duchamp1>

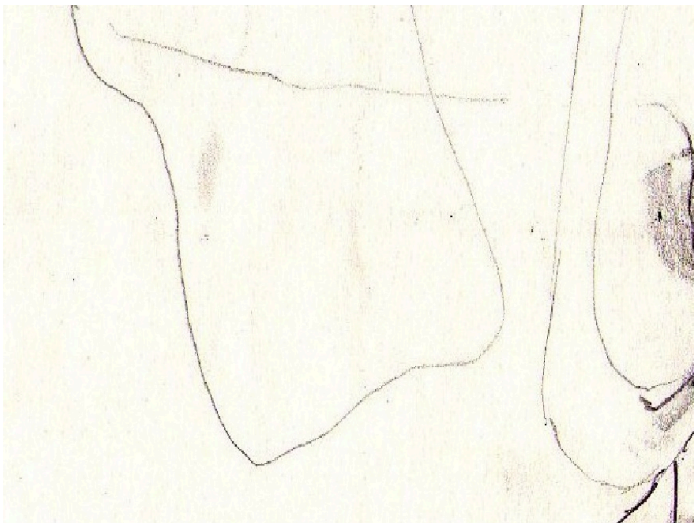


15b Lloyd Road Singapore 239098 (co. reg. 201004398N)
helpdesk 656.227.2902, fax 656.227.0213

Keith Waller

Multimedia Art
5 Wellington Square
United Kingdom

View the full portfolio at <http://www.thecreativefinder.com/duchamp1>



Keith Waller

Multimedia Art
5 Wellington Square
United Kingdom

View the full portfolio at <http://www.thecreativefinder.com/duchamp1>

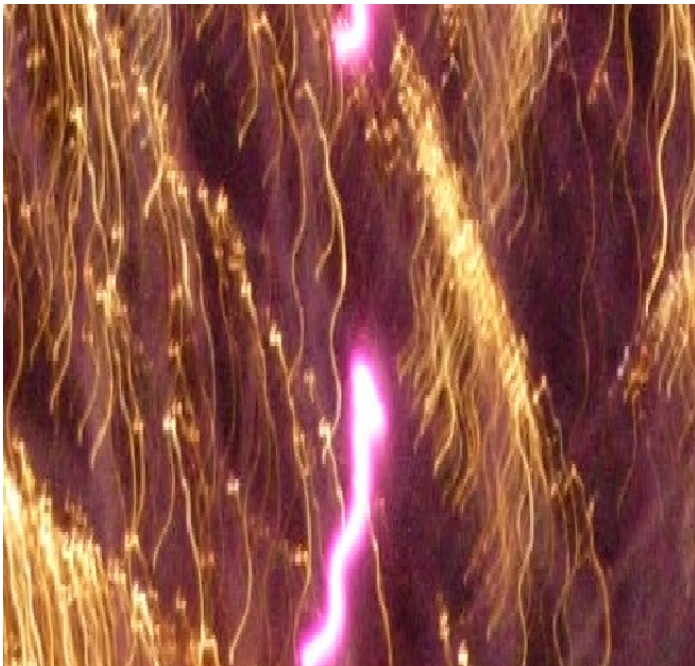


15b Lloyd Road Singapore 239098 (co. reg. 201004398N)
helpdesk 656.227.2902, fax 656.227.0213

Keith Waller

Multimedia Art
5 Wellington Square
United Kingdom

View the full portfolio at <http://www.thecreativefinder.com/duchamp1>

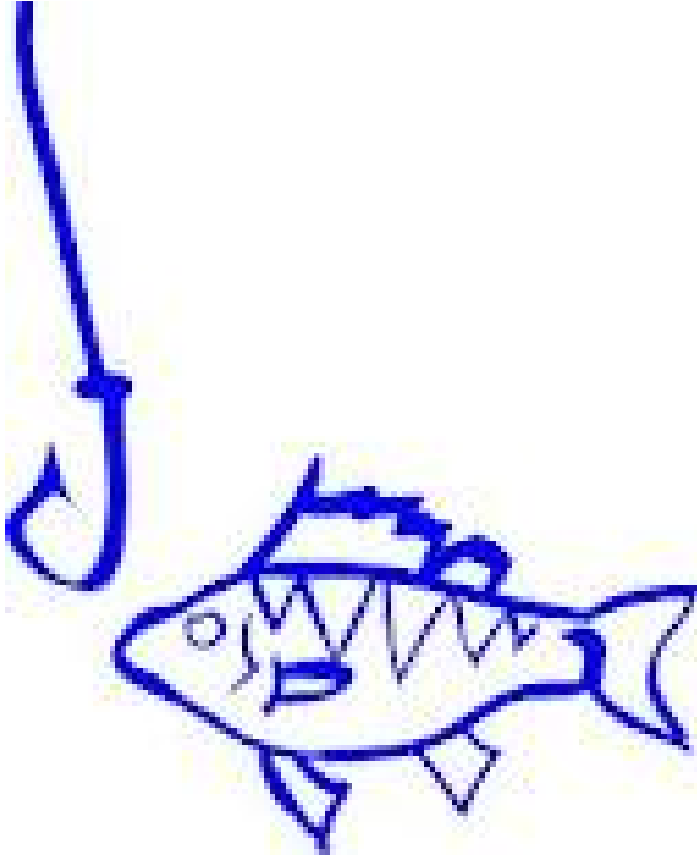


15b Lloyd Road Singapore 239098 (co. reg. 201004398N)
helpdesk 656.227.2902, fax 656.227.0213

Keith Waller

Multimedia Art
5 Wellington Square
United Kingdom

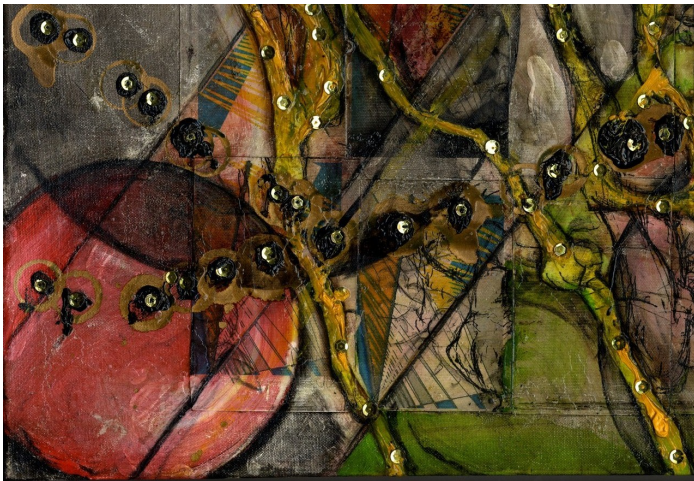
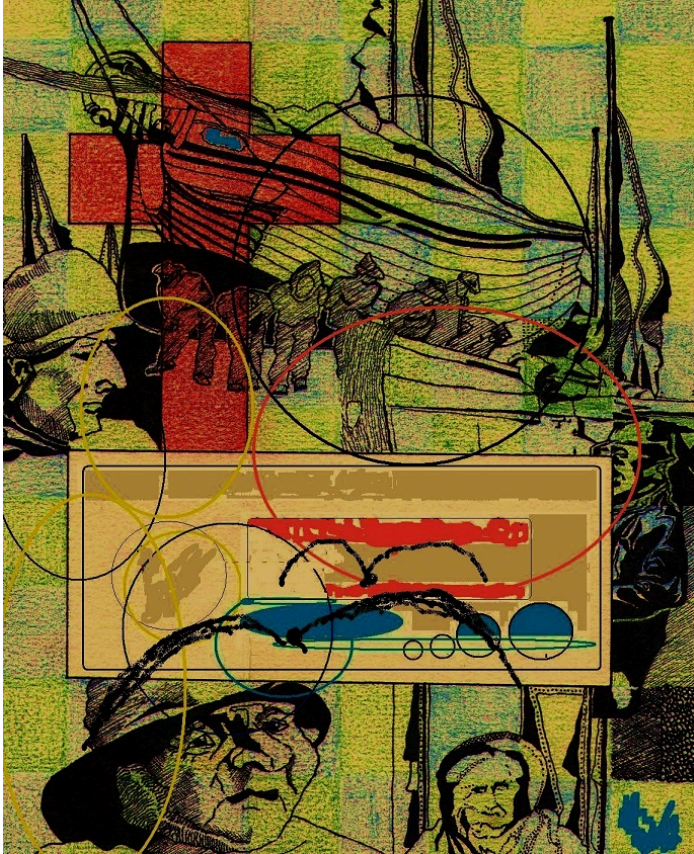
View the full portfolio at <http://www.thecreativefinder.com/duchamp1>



Keith Waller

Multimedia Art
5 Wellington Square
United Kingdom

View the full portfolio at <http://www.thecreativefinder.com/duchamp1>

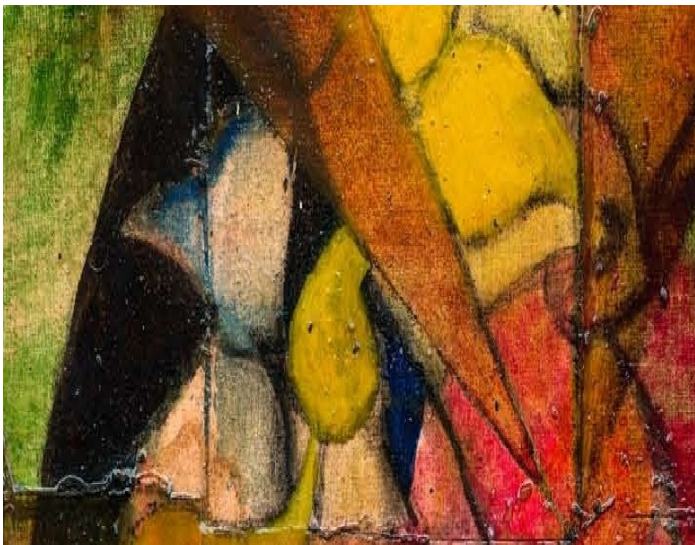


15b Lloyd Road Singapore 239098 (co. reg. 201004398N)
helpdesk 656.227.2902, fax 656.227.0213

Keith Waller

Multimedia Art
5 Wellington Square
United Kingdom

View the full portfolio at <http://www.thecreativefinder.com/duchamp1>

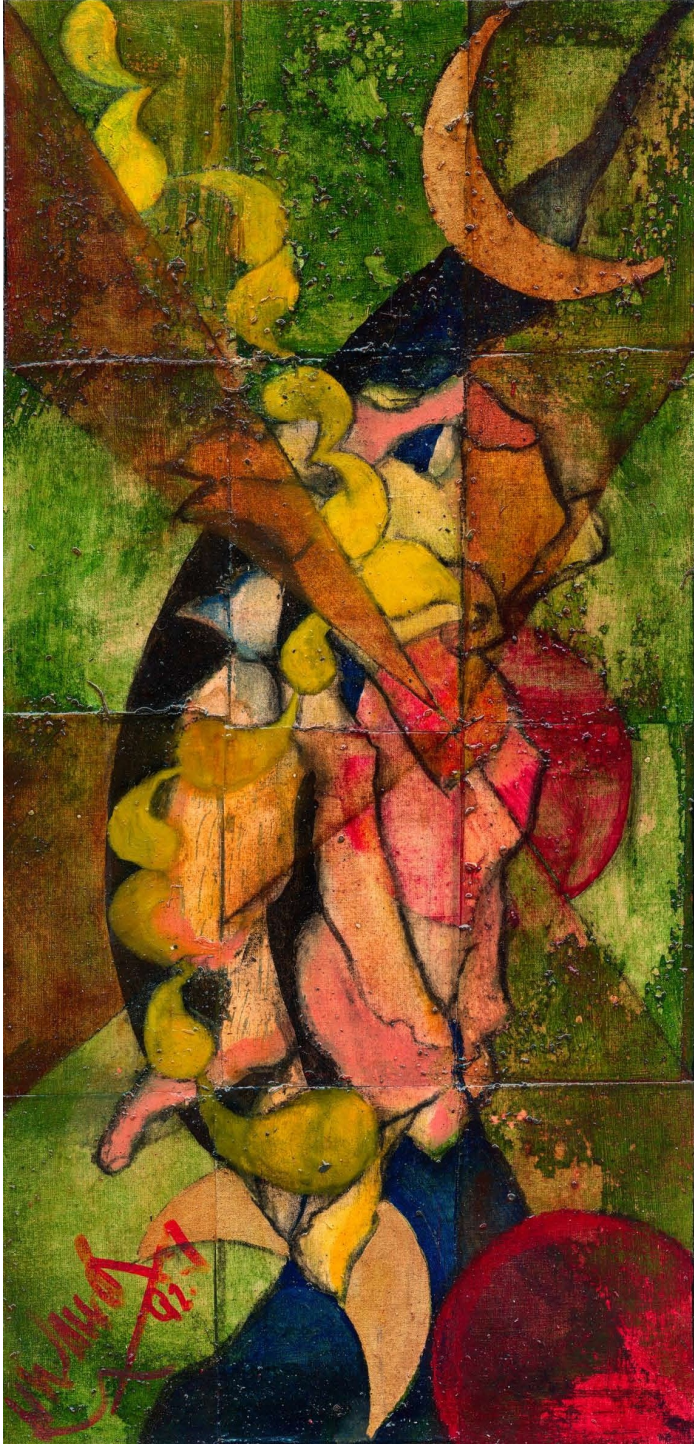


15b Lloyd Road Singapore 239098 (co. reg. 201004398N)
helpdesk 656.227.2902, fax 656.227.0213

Keith Waller

Multimedia Art
5 Wellington Square
United Kingdom

View the full portfolio at <http://www.thecreativefinder.com/duchamp1>



15b Lloyd Road Singapore 239098 (co. reg. 201004398N)
helpdesk 656.227.2902, fax 656.227.0213

Keith Waller

Multimedia Art
5 Wellington Square
United Kingdom

View the full portfolio at <http://www.thecreativefinder.com/duchamp1>

