

Claire Bushey

Textile Design

relocating to California in June

United States

View the full portfolio at <http://www.thecreativefinder.com/cbushey>

Professional Experience and Curriculum Vitae

Please kindly get in touch for more information.

Previous Clientele

Please kindly get in touch for more information.

Awards and Accolades

OBJECTIVE Seeking a position in a surface design field, in which I can use my skills and knowledge in apparel design, as well as my skills in surface design, to create exceptional design solutions in print design and graphics.

EDUCATION Rhode Island School of Design • Providence RI • Bachelor of Fine Arts, Apparel Design 2009
Merit Scholarship • Ann Taylor/Piselli Scholarship • Dean's List • Published: AVA Series: Fashion Drawing

SKILLS Surface Design: experienced in creating and modifying company logos, as well as creating custom artwork for screen-printing, print repeats, and embroidery for apparel and housing goods. Experienced with fine art printmaking, as well as screen printing: developing screens through photo emulsion, waterbased, plasticsol ink, and digital color separation.

Apparel Design: Concept and mood board creation, fashion illustration, pattern drafting, draping, garment construction, machine knitting, creating spec sheets and spec packaging for production.

Computer: Adobe Photoshop, Illustrator, InDesign, Permapress Laser Etching, Microsoft Office: Word, Excel, PowerPoint on PC and Mac platforms.

SURFACE DESIGN EXPERIENCE | East Coast Embroidery • Providence RI
Graphic Production Artist 2013

Create and modify logos for clients, prepare artwork for laser etching, screenprinting, and embroidery using specialty software.

VonJai Children's Wear Line • Providence RI
Creative Director, Graphic Designer 2012

Designed and created samples for a children's wear line. Created print for garments, sketches, flats, logos and graphics for the website, and patterns and slopers for production.

Marshall Color Studios • Belchertown MA
Graphic Production Artist 2010

Assisted in print design and development for a variety of apparel companies including Justice, logo creation, shirt graphics for Hasbro and licensed products, graphic set ups and color separations for college sports apparel, set up stitch configuration and jersey numbers for Reebok using Adobe Creative Suite.
100 Lloyd Road Singapore 235698 (co. reg. 2010043984)
tel 656.227.2902, fax 656.227.0213

WWW.THECREATIVEFINDER.COM APPAREL EXPERIENCE | Nanette Lepore • New York NY

Intern 2009

Assisted design team in delivering and sourcing materials to garment district for

Claire Bushey

Textile Design

relocating to California in June
United States

View the full portfolio at <http://www.thecreativefinder.com/cbushey>



Claire Bushey

Textile Design

relocating to California in June
United States

View the full portfolio at <http://www.thecreativefinder.com/cbushey>



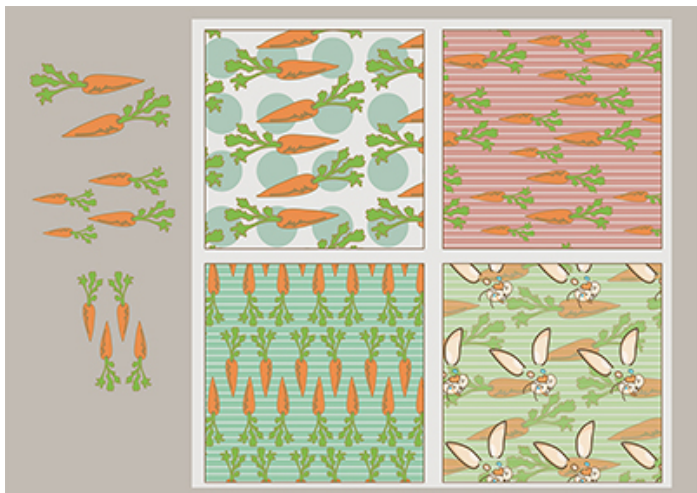
15b Lloyd Road Singapore 239098 (co. reg. 201004398N)
helpdesk 656.227.2902, fax 656.227.0213

Claire Bushey

Textile Design

relocating to California in June
United States

View the full portfolio at <http://www.thecreativefinder.com/cbushey>



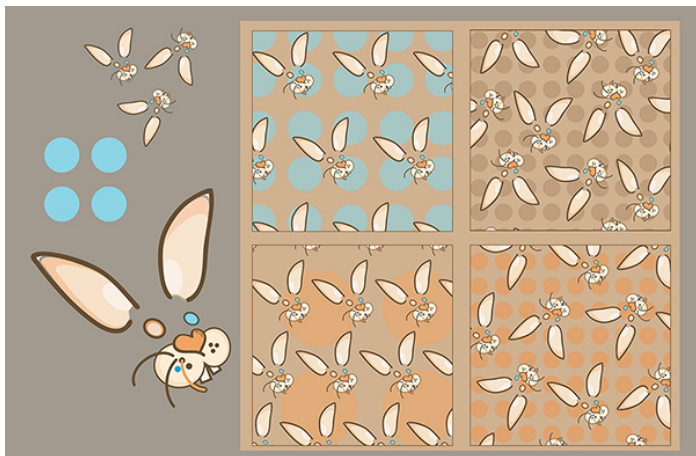
Claire Bushey

Textile Design

relocating to California in June

United States

View the full portfolio at <http://www.thecreativefinder.com/cbushey>



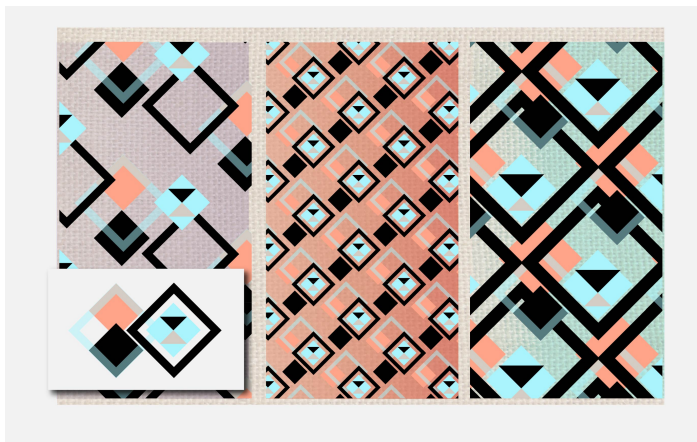
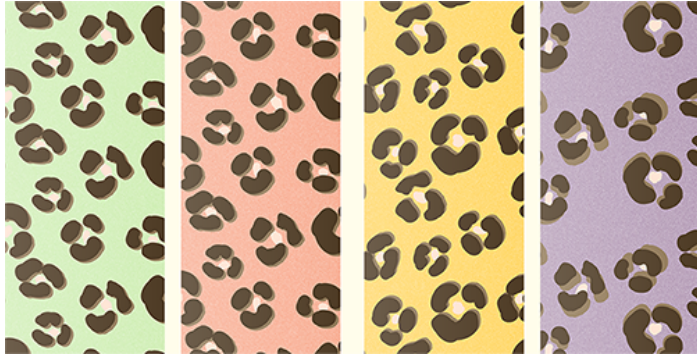
Claire Bushey

Textile Design

relocating to California in June

United States

View the full portfolio at <http://www.thecreativefinder.com/cbushey>



Claire Bushey

Textile Design

relocating to California in June

United States

View the full portfolio at <http://www.thecreativefinder.com/cbushey>

