

Glenn Gibson

CGI Retouching
1140 Malvern Road
Malvern, Melbourne VIC 3143
Australia

View the full portfolio at <http://www.thecreativefinder.com/bluefish>

Professional Experience and Curriculum Vitae

Glenn's engaging photography work across people, products and automotive has seen him being highly sought after by clients in both Australia and Japan. A highly effective communicator, Glenn's ability to manage complex briefing requirements from both a creative and logistical perspective has seen him work on many large campaigns including large global car launches.

A renown master of complex post production and retouching techniques, Glenn and the team at his production company 'Blue Fish Productions' are also now creating stunning CGI work. With the ability to execute jobs via either traditional photographic methods or CGI they can offer clients an unbiased view on which direction will be most effective given the specific parameters of the job.

With so many years of real world photographic experience, Glenn has an eye to directing CGI work that is the envy of many a technician. With the recent addition of gun CGI visualiser Troy Witte to the Blue Fish team, the CGI work being produced is both exciting and very highly credible.

Particularly when it comes to working on large projects, Glenn has a unique ability to think laterally, yet efficiently across both the logical and creative (left /right brain) parameters of briefs. This translates into high quality, cost effective results produced with a seemingly minimal amount of fuss.

In Glenn's words "There's no part of the process of creating images that's not important as every single one of the myriad of small decisions that get made along the way, will impact the end result. Interpreting the brief correctly is vital, then from a production point of view, it's all about setting up the right opportunity to be creative".

"The challenge, and clients have a bigger role in this than they realise, is to ensure we put ourselves in the right position, at the right time of day, at the right location or studio, with the right gear and crew, the right product, the correct understanding of the brief and minimal distractions..... so that we can then be creative. We like to work closely with our clients to coordinate the practical and logistical parameters of any job as each difficulty that's added to the equation potentially diminishes our ability to produce a great result. Although, that's not to say we don't regularly pull rabbits from hats if required!"

Previous Clientele

Nissan, ANZ, Mazda, RACV, Henry Langdon's, Dewars, Barcardi, Honda, MAS, Suzuki, Heineken, Big M, Holden, Medibank Private, BMW, Harcourts, Top Gear, Tourism Tasmania

Awards and Accolades

Please kindly get in touch for more information.

Awards and Accolades

Please kindly get in touch for more information.

Rob Lloyd Road Singapore 239098 (co. reg. 201004398N)
helpdesk 656.227.2902, fax 656.227.0213

Glenn Gibson

CGI Retouching
1140 Malvern Road
Malvern, Melbourne VIC 3143
Australia

View the full portfolio at <http://www.thecreativefinder.com/bluefish>

Please kindly get in touch for portfolio works.

Please kindly get in touch for portfolio works.



Glenn Gibson

CGI Retouching
1140 Malvern Road
Malvern, Melbourne VIC 3143
Australia

View the full portfolio at <http://www.thecreativefinder.com/bluefish>



15b Lloyd Road Singapore 239098 (co. reg. 201004398N)
helpdesk 656.227.2902, fax 656.227.0213

Glenn Gibson

CGI Retouching
1140 Malvern Road
Malvern, Melbourne VIC 3143
Australia

View the full portfolio at <http://www.thecreativefinder.com/bluefish>



15b Lloyd Road Singapore 239098 (co. reg. 201004398N)
helpdesk 656.227.2902, fax 656.227.0213

Glenn Gibson

CGI Retouching
1140 Malvern Road
Malvern, Melbourne VIC 3143
Australia

View the full portfolio at <http://www.thecreativefinder.com/bluefish>



Glenn Gibson

CGI Retouching
1140 Malvern Road
Malvern, Melbourne VIC 3143
Australia

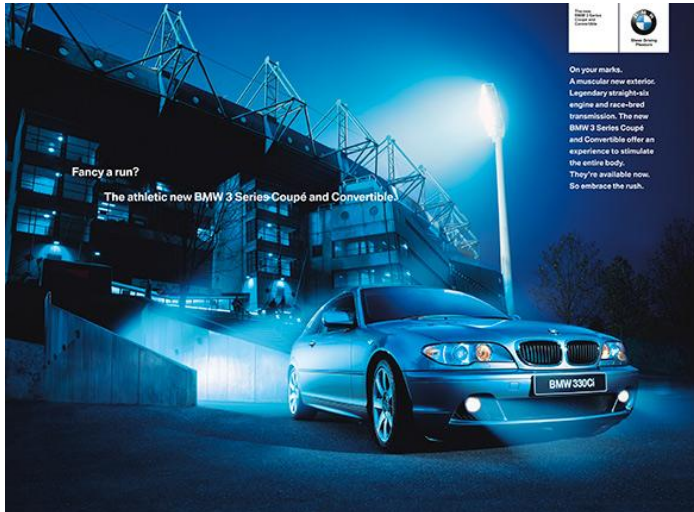
View the full portfolio at <http://www.thecreativefinder.com/bluefish>



Glenn Gibson

CGI Retouching
1140 Malvern Road
Malvern, Melbourne VIC 3143
Australia

View the full portfolio at <http://www.thecreativefinder.com/bluefish>



15b Lloyd Road Singapore 239098 (co. reg. 201004398N)
helpdesk 656.227.2902, fax 656.227.0213

Glenn Gibson

CGI Retouching
1140 Malvern Road
Malvern, Melbourne VIC 3143
Australia

View the full portfolio at <http://www.thecreativefinder.com/bluefish>



15b Lloyd Road Singapore 239098 (co. reg. 201004398N)
helpdesk 656.227.2902, fax 656.227.0213

Glenn Gibson

CGI Retouching
1140 Malvern Road
Malvern, Melbourne VIC 3143
Australia

View the full portfolio at <http://www.thecreativefinder.com/bluefish>



15b Lloyd Road Singapore 239098 (co. reg. 201004398N)
helpdesk 656.227.2902, fax 656.227.0213

Glenn Gibson

CGI Retouching
1140 Malvern Road
Malvern, Melbourne VIC 3143
Australia

View the full portfolio at <http://www.thecreativefinder.com/bluefish>

