

# Lucy Jamieson

Textile Design  
United Kingdom

View the full portfolio at <http://www.thecreativefinder.com/artemis37>

## Professional Experience and Curriculum Vitae

Textile designer Lucy Jamieson graduated from the University of Brighton in 2003 with a BA(Hons) in Visual Culture.

?This opportunity to study art and design history through the ages greatly informed and enhanced her own creative practice; which pre-dated her academic studies, continued throughout her course and now takes the form of textile design; experimenting with different materials and styles with a view to establishing her own product range.

Her creative career began in 1989/1990 with a six-month period of study at the Highfields College of Art and Design in Huddersfield and with the publication of an ink and brush drawing in the Huddersfield-based poetry magazine, The North.

?More recently , she has published her work through Saatchi Online , is continuing to develop the textile design and illustrative aspects of her work, inspired in part by William Morris and Arthur Rackham, and will shortly be establishing a range of textile products based on her own designs.

## Previous Clientele

Contrado UK  
World of Interiors Magazine

## Awards and Accolades

Education:

Holmfirth High School. GCSE English Language, Art & Design, Geography  
Strode College. Access to HE : Archaeology, Sociology, ICT, Mathematics, English Language, Time Management, Study Skills, Interview Technique (pass with distinction)  
Brighton University: School of Historical and Critical Studies. BA. Hons Visual Culture ( II: I Upper Division)  
University of Birmingham: Shakespeare Institute. MA. Shakespeare, Stratford upon Avon and the Cultural History of Renaissance England (pass with merit).

Research:

Adapting Hamlet: Authorship, Originality and Representation. A textual and historical analysis of Hamlet from the 12th century AD to the present day. ( Beveridge, Lucy. University of Brighton: School of Historical & Critical Studies, 2003).  
Multi-media and the Jacobean Masque 1609-1613. A revised interpretation of political motivation and cultural practice in the early Stuart court ( Beveridge, Lucy. University of Birmingham: Shakespeare Institute, 2005)

Credits and employment:

Opera North: The Threepenny Opera (Huddersfield 1987). Rehearsal stand in, stage hand.

15b Lloyd Road Singapore 239098 (co. reg. 201004398N)

Single page illustration: brush and ink nude. The North Issue 29 (The Poetry Business: 1990)

Skylark Peoples' Arts: The Ghosts of the West Pier (Brighton, 2001). Resident artist, visual effects adviser

# Lucy Jamieson

Textile Design  
United Kingdom

View the full portfolio at <http://www.thecreativefinder.com/artemis37>

Please kindly get in touch for portfolio works.



15b Lloyd Road Singapore 239098 (co. reg. 201004398N)  
helpdesk 656.227.2902, fax 656.227.0213

# Lucy Jamieson

Textile Design  
United Kingdom

View the full portfolio at <http://www.thecreativefinder.com/artemis37>





# Lucy Jamieson

Textile Design  
United Kingdom

View the full portfolio at <http://www.thecreativefinder.com/artemis37>





# Lucy Jamieson

Textile Design  
United Kingdom

View the full portfolio at <http://www.thecreativefinder.com/artemis37>

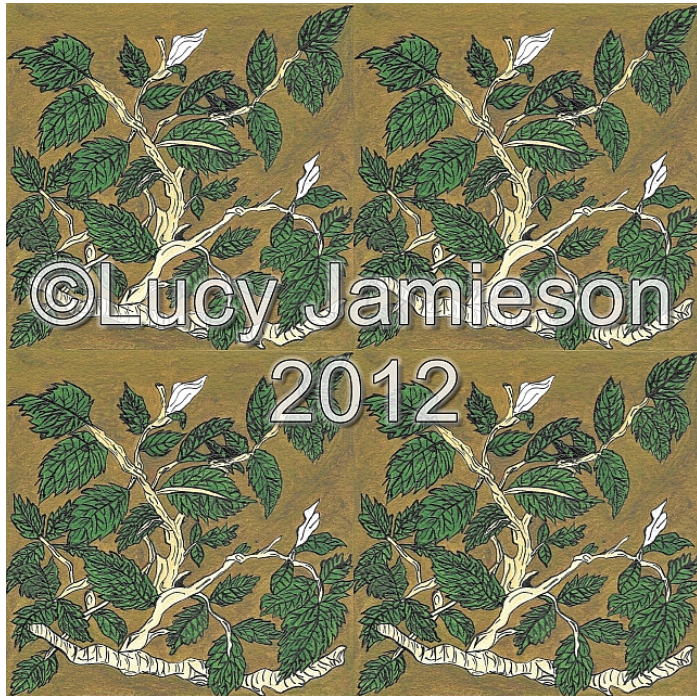




# Lucy Jamieson

Textile Design  
United Kingdom

View the full portfolio at <http://www.thecreativefinder.com/artemis37>





# Lucy Jamieson

Textile Design  
United Kingdom

View the full portfolio at <http://www.thecreativefinder.com/artemis37>



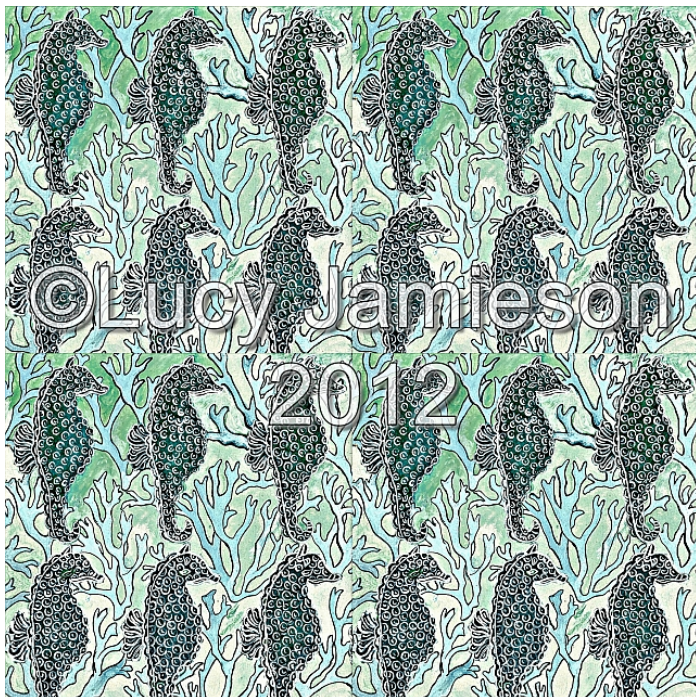
15b Lloyd Road Singapore 239098 (co. reg. 201004398N)  
helpdesk 656.227.2902, fax 656.227.0213



# Lucy Jamieson

Textile Design  
United Kingdom

View the full portfolio at <http://www.thecreativefinder.com/artemis37>





# Lucy Jamieson

Textile Design  
United Kingdom

View the full portfolio at <http://www.thecreativefinder.com/artemis37>





# Lucy Jamieson

Textile Design  
United Kingdom

View the full portfolio at <http://www.thecreativefinder.com/artemis37>

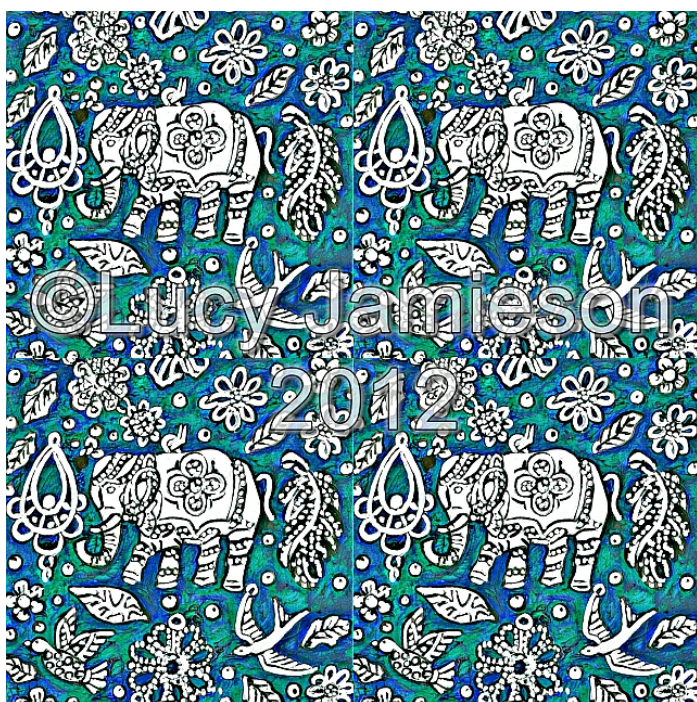




# Lucy Jamieson

Textile Design  
United Kingdom

View the full portfolio at <http://www.thecreativefinder.com/artemis37>

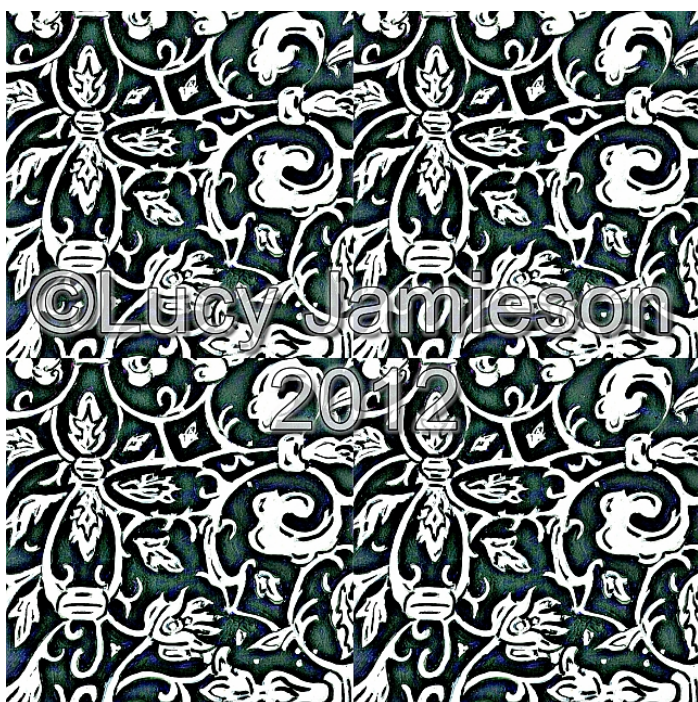
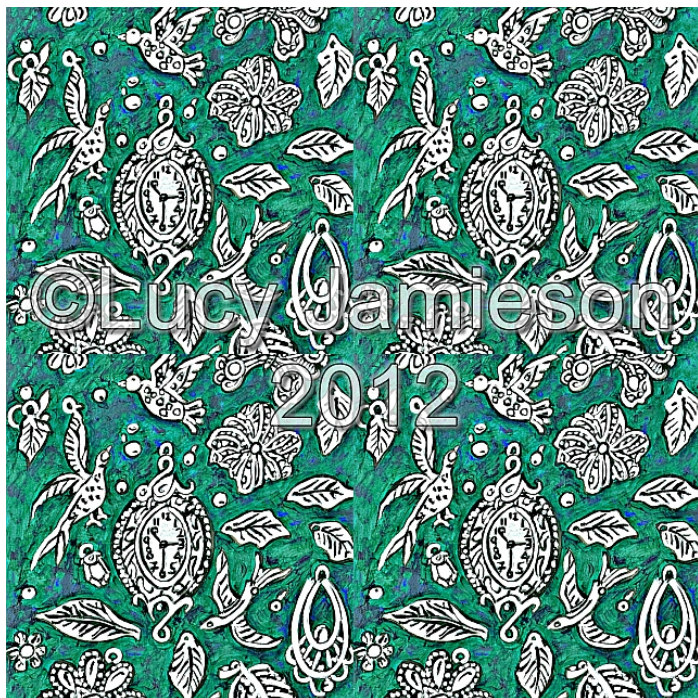




# Lucy Jamieson

Textile Design  
United Kingdom

View the full portfolio at <http://www.thecreativefinder.com/artemis37>



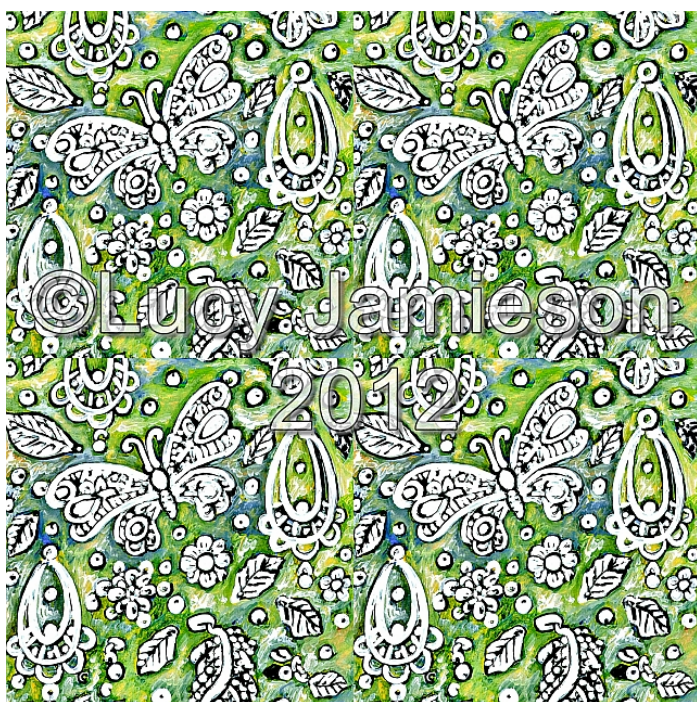
15b Lloyd Road Singapore 239098 (co. reg. 201004398N)  
helpdesk 656.227.2902, fax 656.227.0213



# Lucy Jamieson

Textile Design  
United Kingdom

View the full portfolio at <http://www.thecreativefinder.com/artemis37>

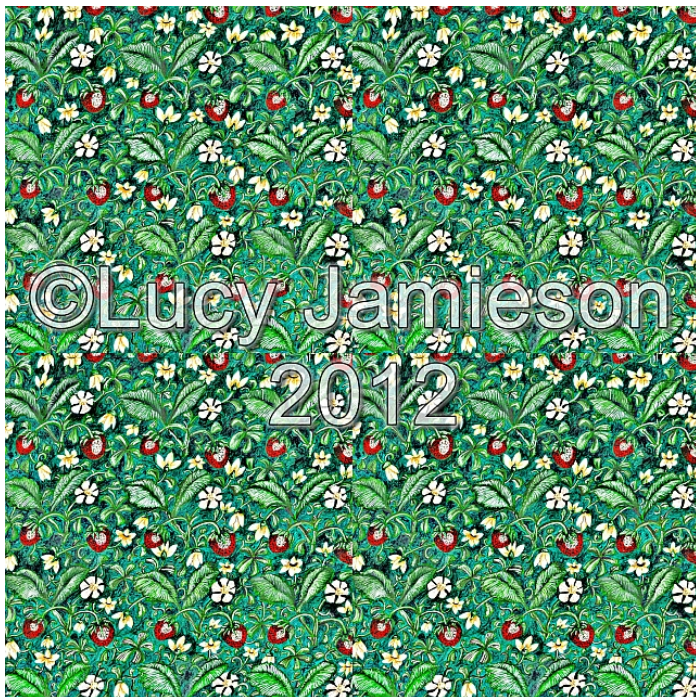




# Lucy Jamieson

Textile Design  
United Kingdom

View the full portfolio at <http://www.thecreativefinder.com/artemis37>



15b Lloyd Road Singapore 239098 (co. reg. 201004398N)  
helpdesk 656.227.2902, fax 656.227.0213